















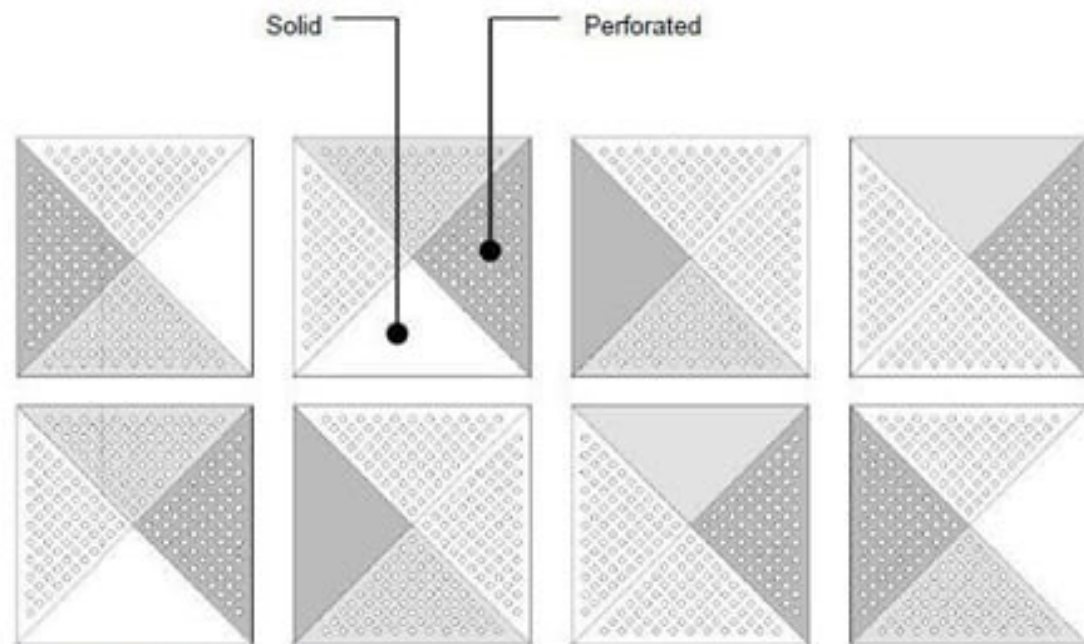




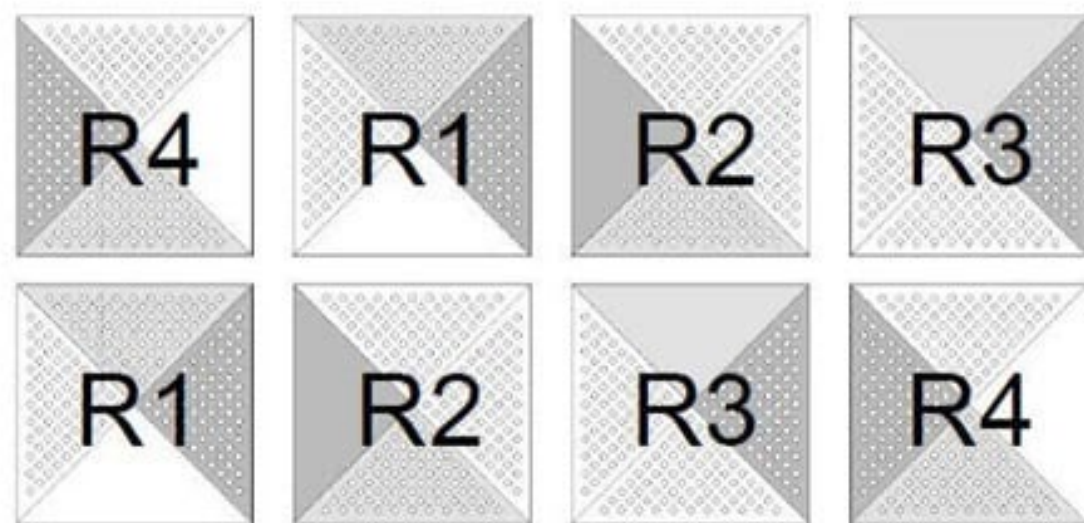
Typical facade arrangement



Typical corner arrangement

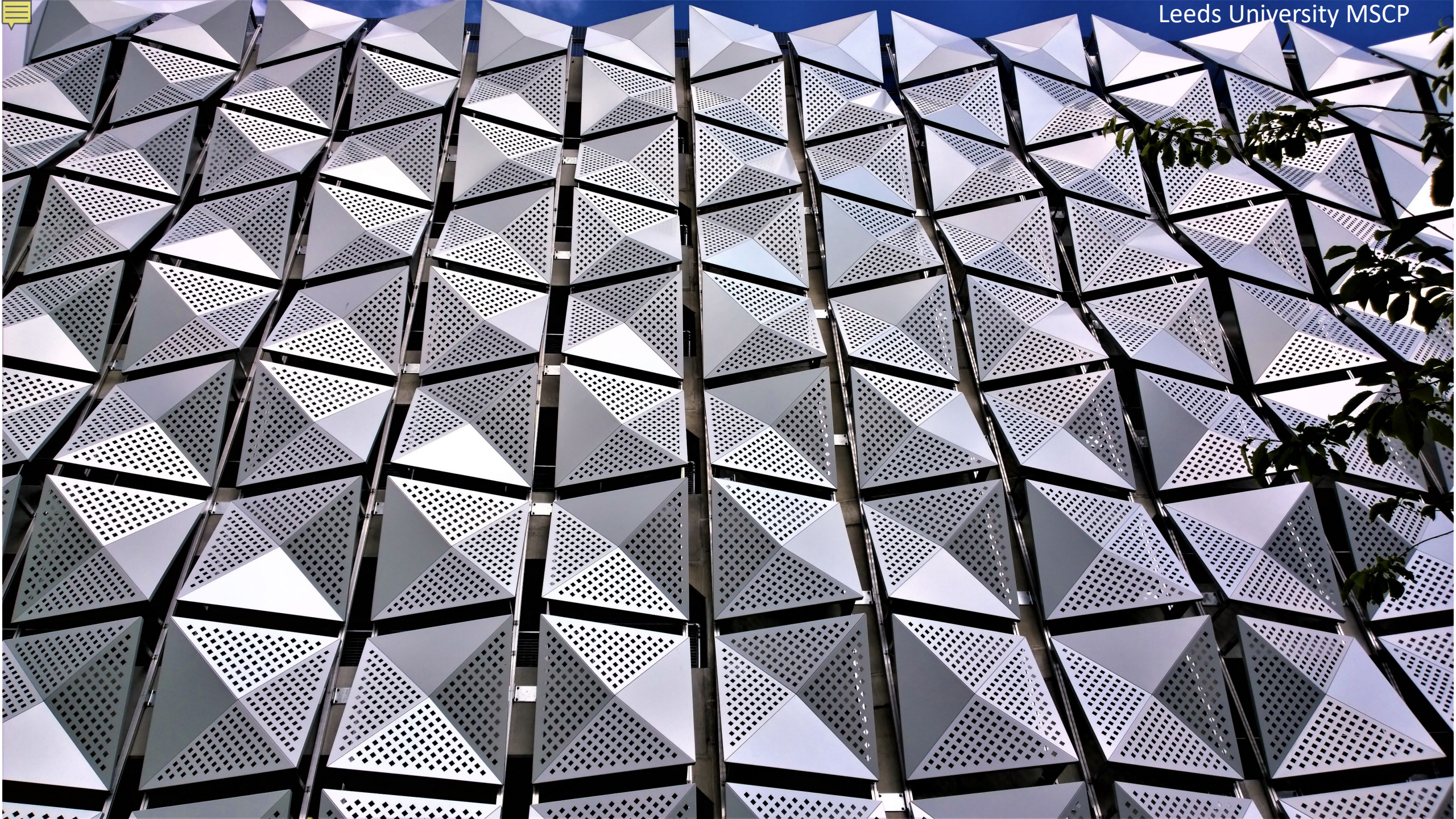


Typical solid/perforated pattern



Typical panel rotation arrangement

























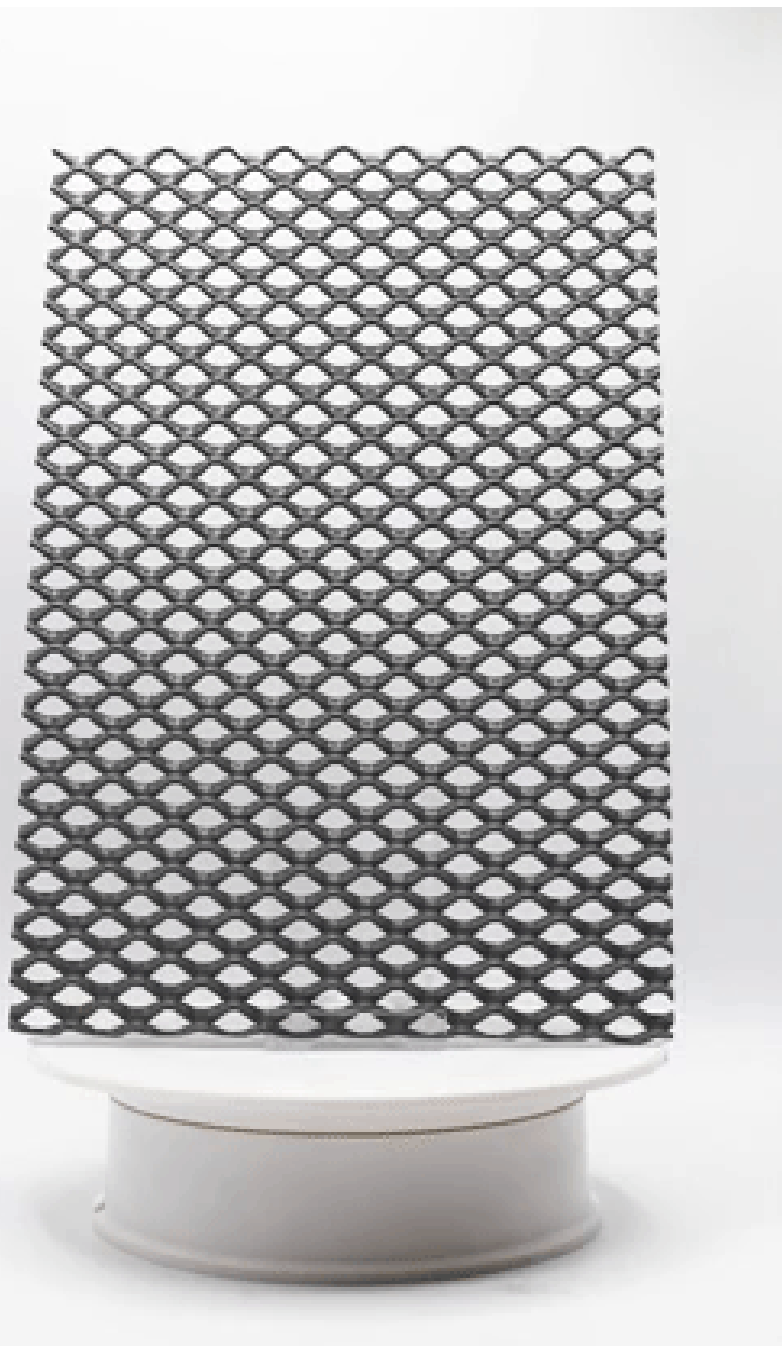
Unity Campus MSCP, Sawston



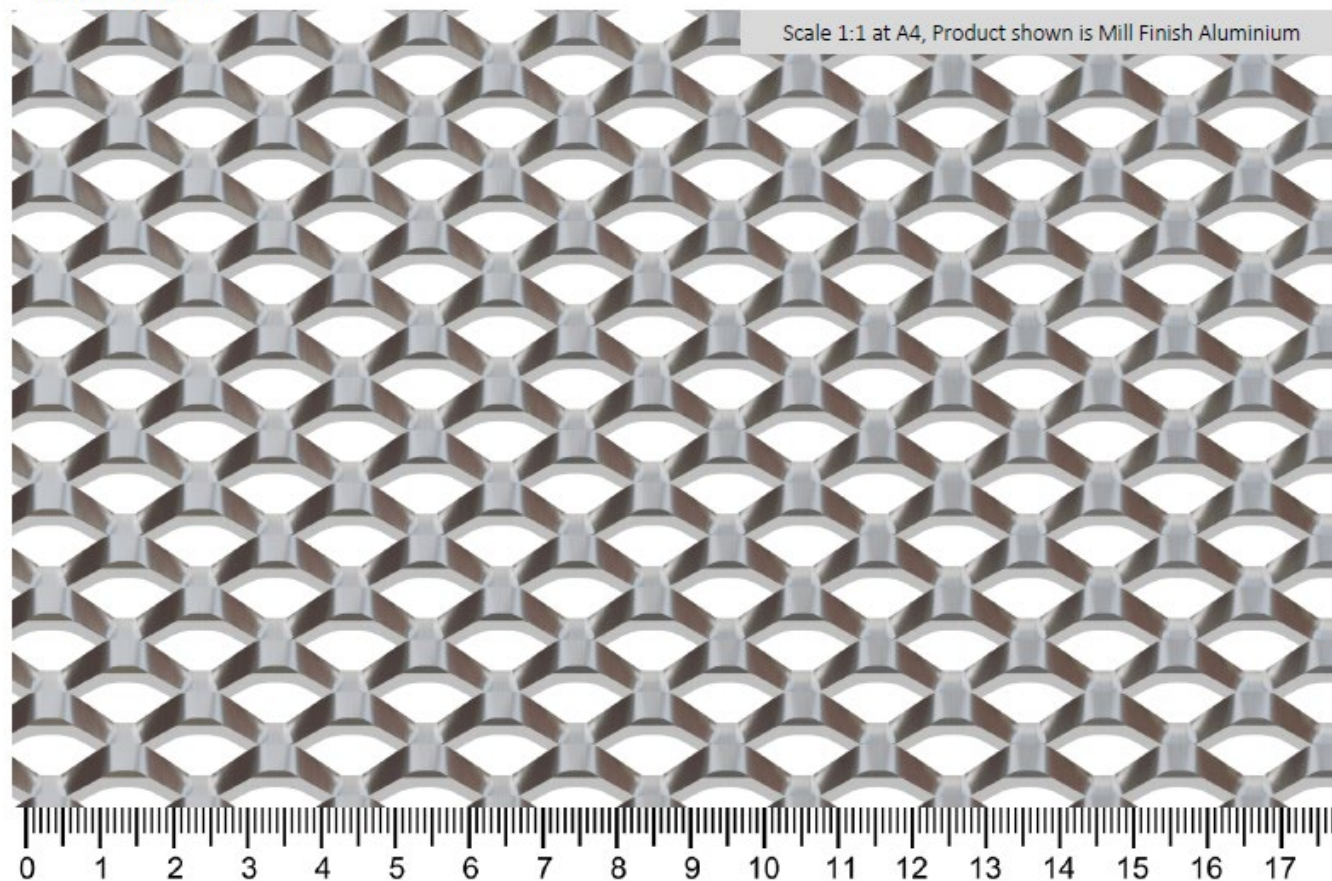








## Soho XL Architectural Expanded Metal Mesh



Pitch (mm)		Thickness (mm)		Weight (Kg/m <sup>2</sup> )		Open Area (%)	
Long way	Short Way	Material	Total	Aluminium	Mild Steel	Visual	Air flow
20	14	1.5	6	2.3	6.7	34	37
20	14	2	6	3.1	8.9	34	37

All specifications are subject to manufacturing tolerances





Sainsbury's MSCP, Brentwood





Clarence Docks MSCP, Leeds







GLADSTONE 80/10

FLEXIBLE



GLADSTONE PC 80/10

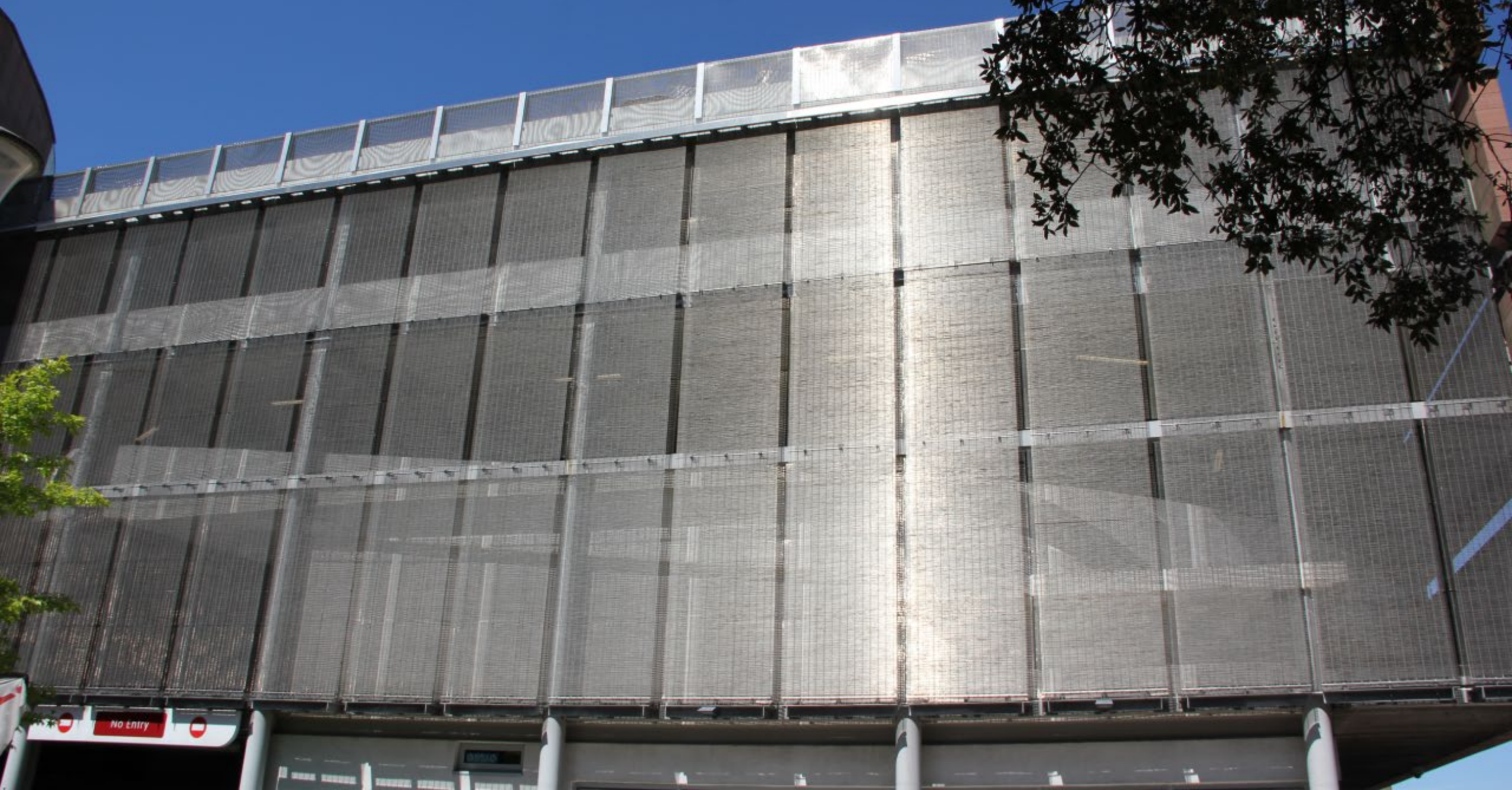
RIGID





Clarence Docks MSCP  
Leeds









Princesshay MSCP, Exeter





Luton Airport MSCP





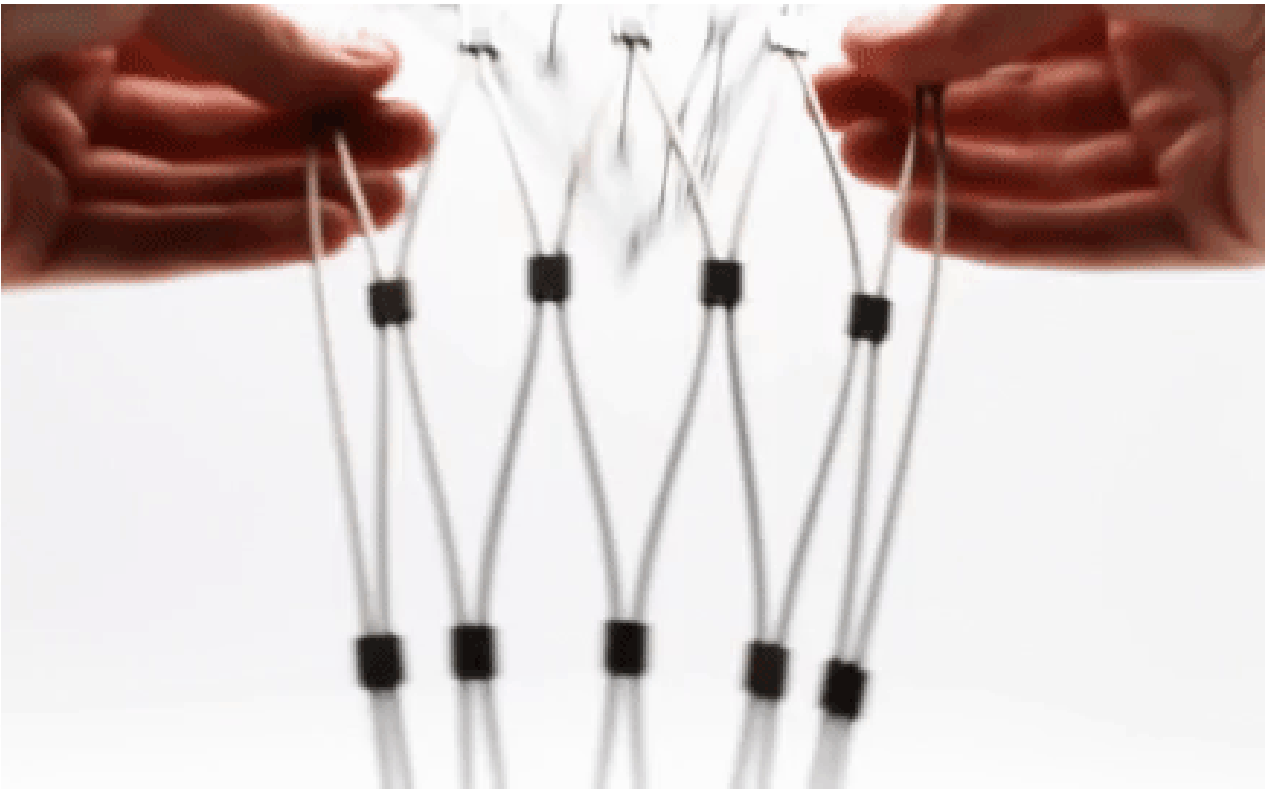
# Rope Diamond 50 'Ferruled' Architectural Mesh



## Specification

Material	Stainless Steel 304 / 316		
Cable	1.0 mm	Pitch	50 mm x 50mm
Open area	93%	Weight	0.42 Kg/m2
Max Width	6,000 mm		

For measuring purposes the ferruled mesh should be stretched to create a 60° angle at the top of the diamond.







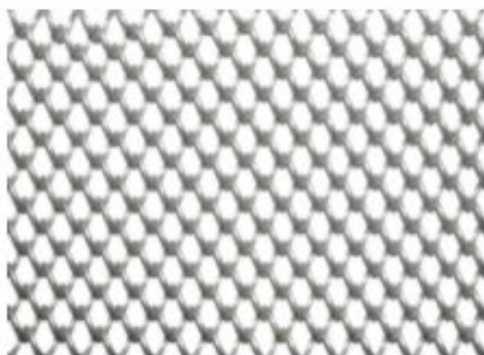




Wynyard MSCP, Auckland NZ







Biscay 7 Spiral Mesh  
Curtain



Coburg 12-12-12-12 Spiral  
Mesh



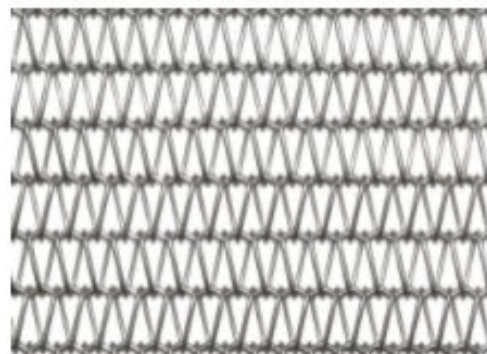
Eiffel 40 Spiral Mesh



Coderch Spiral Mesh



Eiffel 14 Spiral Mesh



Coburg 22-16-38-14 Spiral  
Mesh



Paxton Spiral Mesh



Coburg 30-14-24-14 Spiral  
Mesh









Le Silo MSCP, Nice, France







## Lakeside Heatshield, Cannock





John Lewis MSCP, Milton Keynes







Blackpool Central MSCP



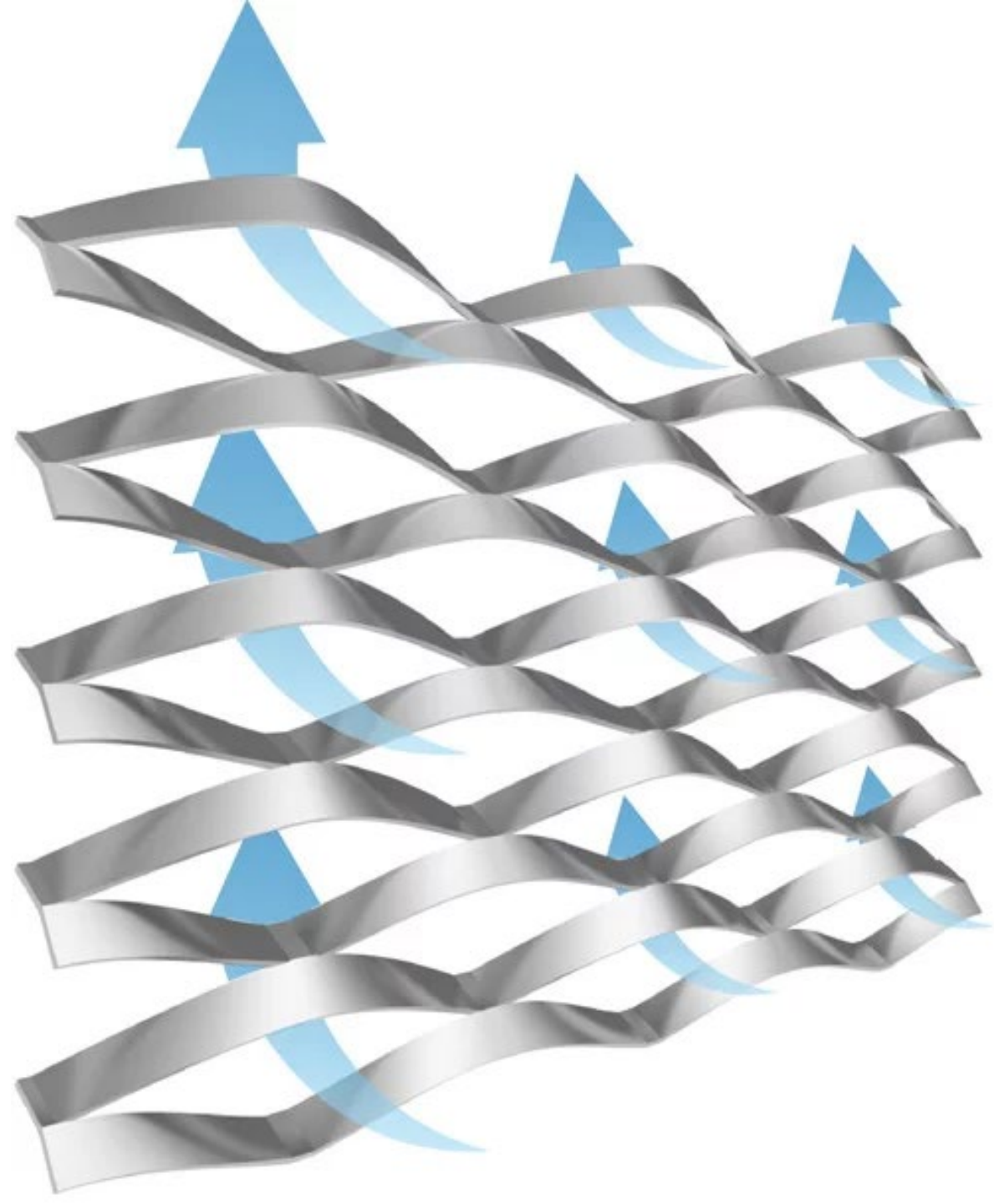
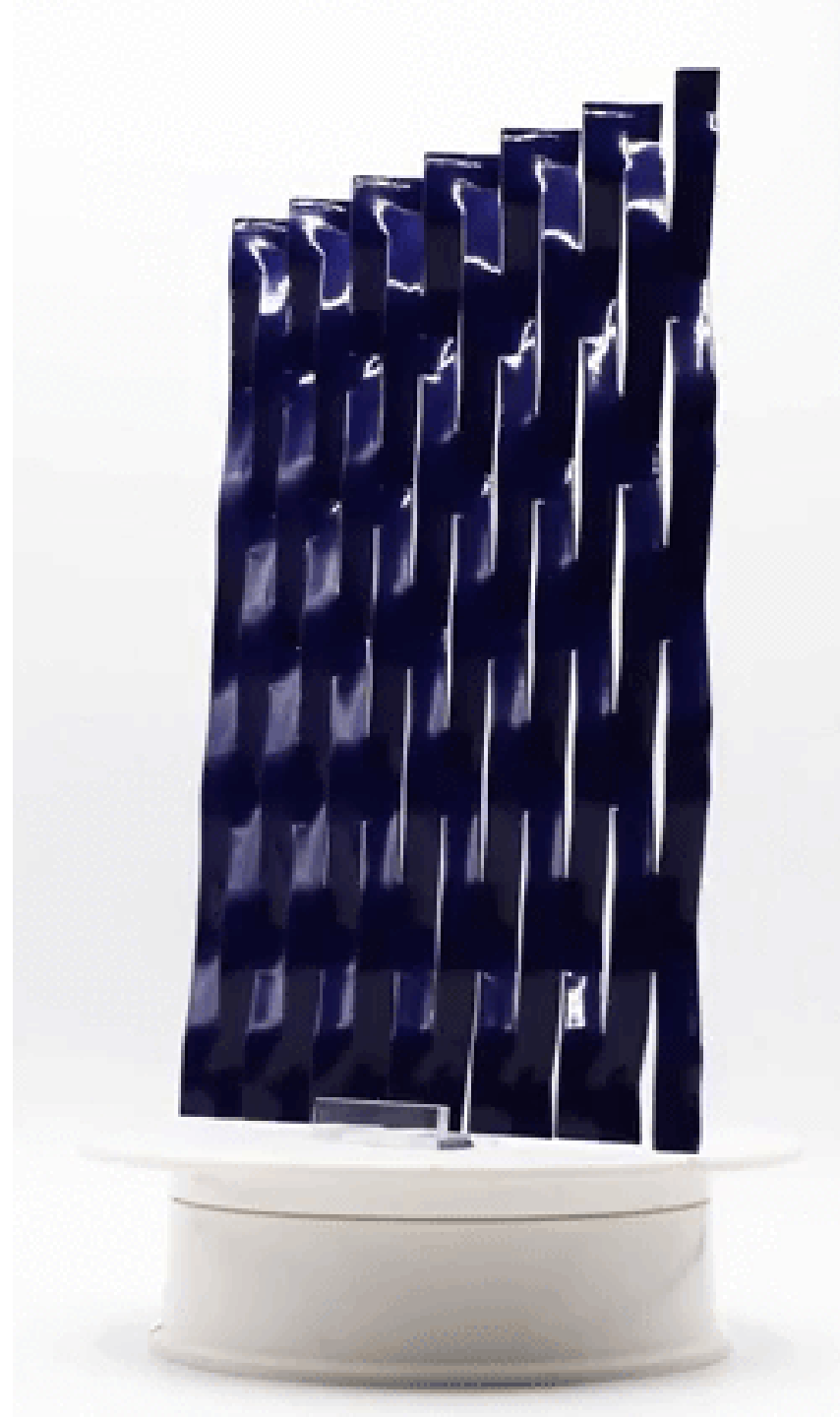




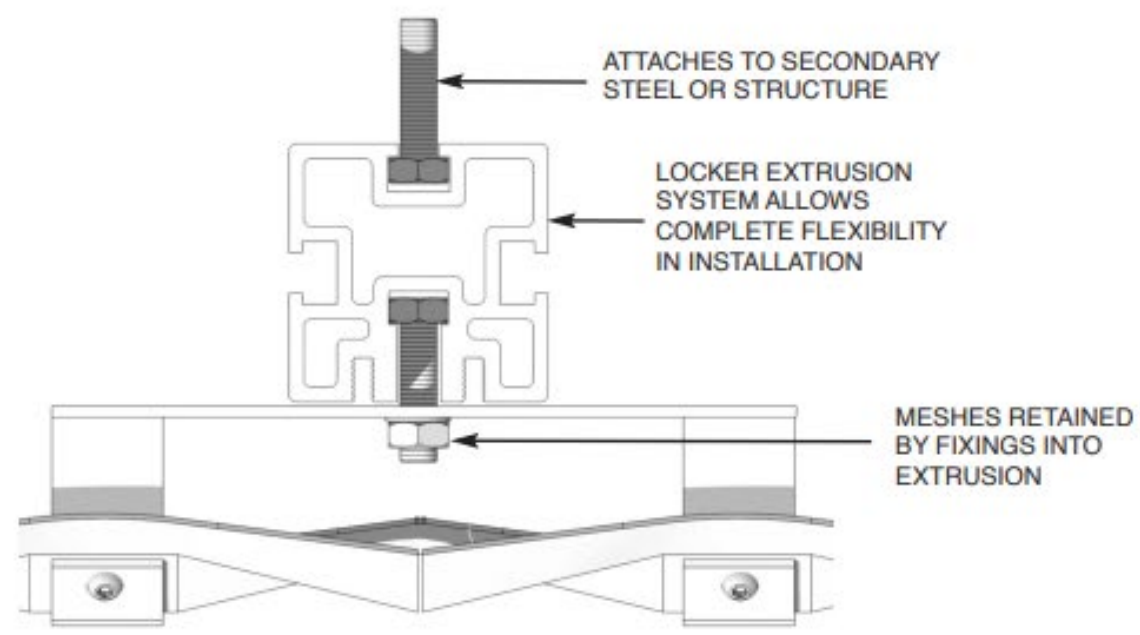




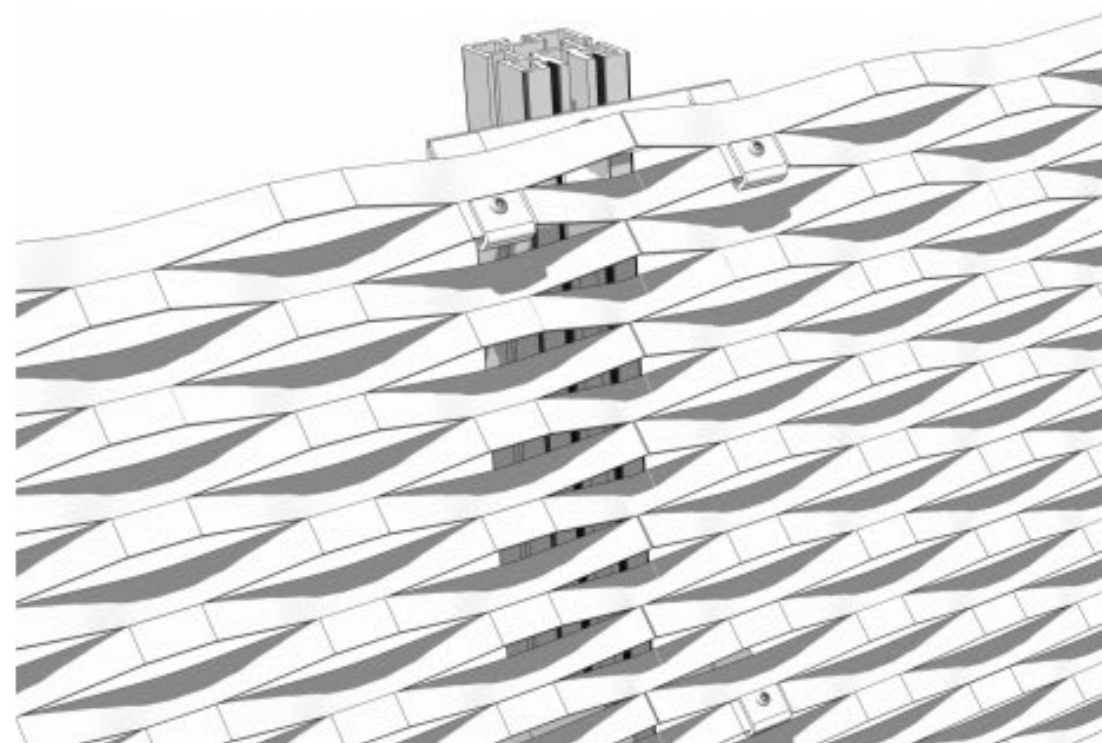
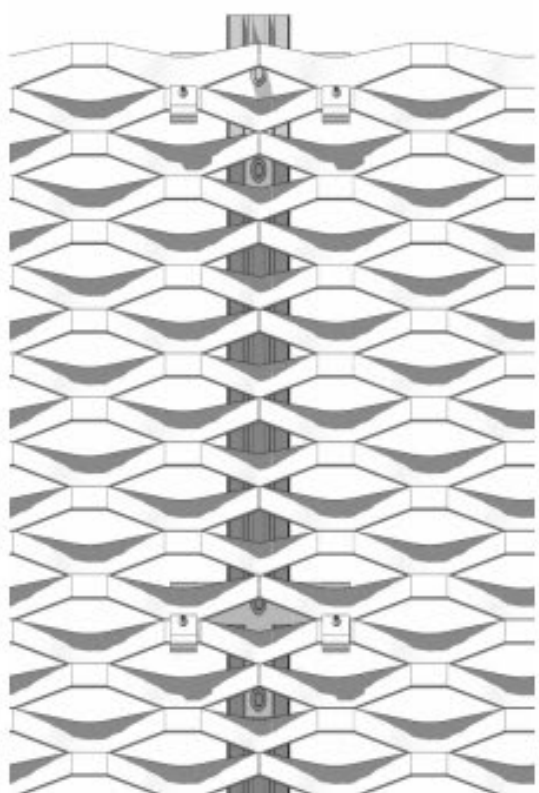








JOINING TWO PANELS



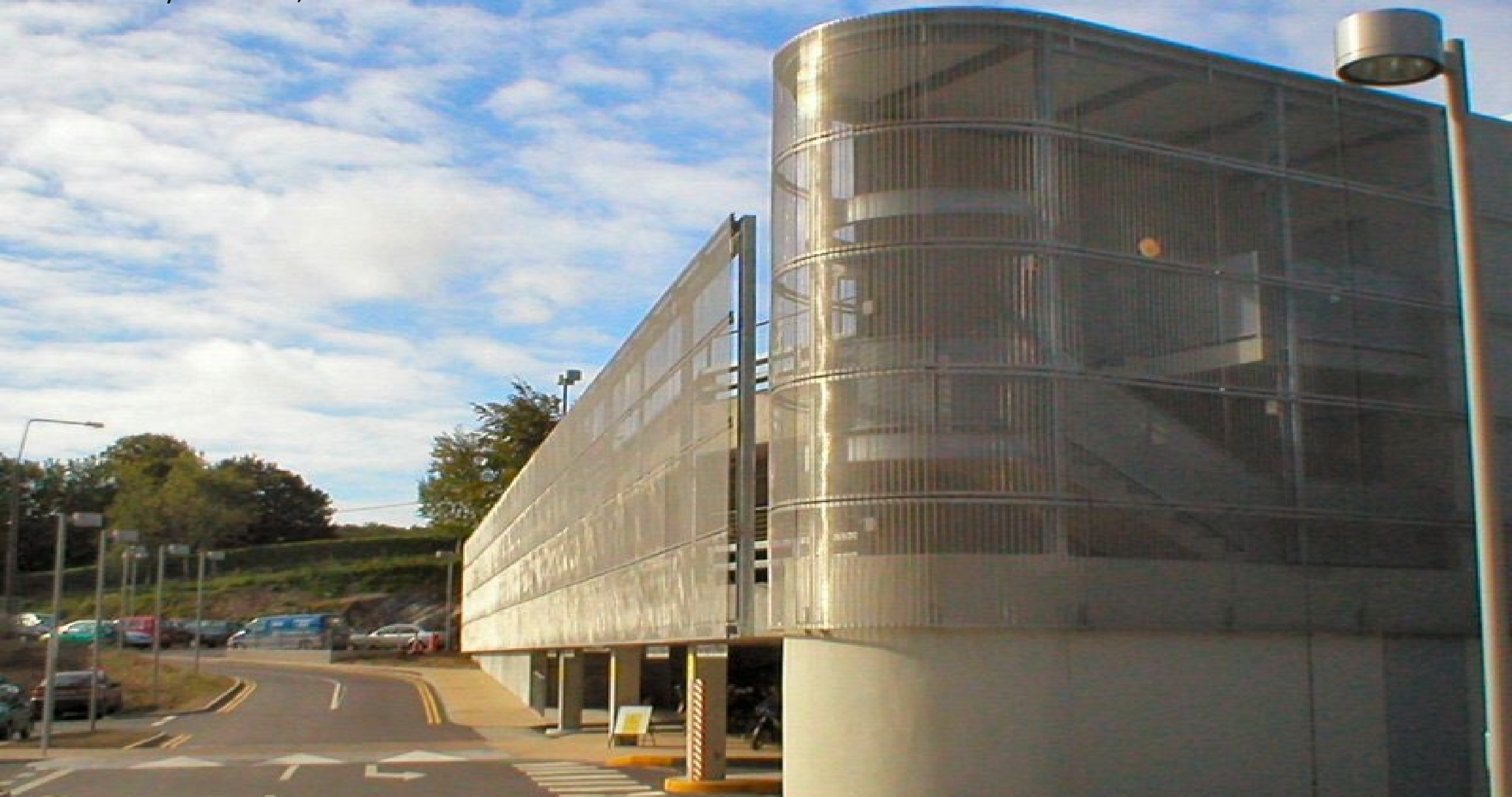














Cork County Hall MSCP, Ireland

