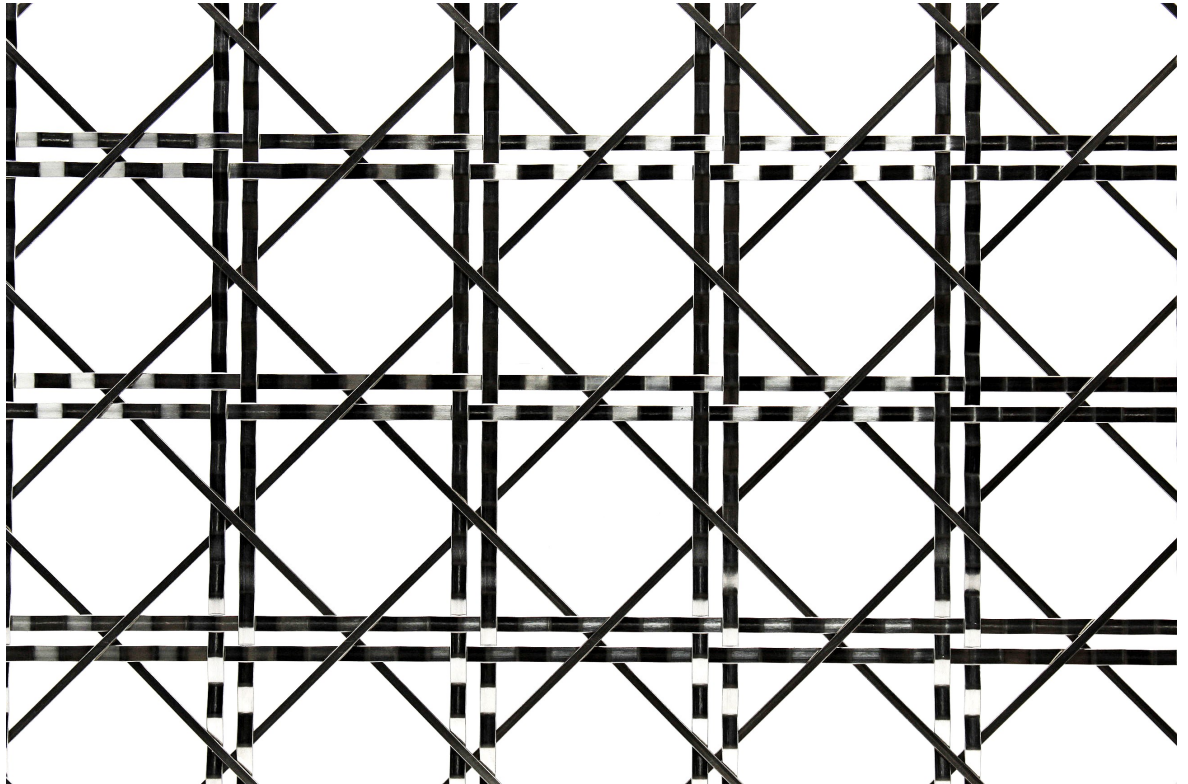


Portland Manilla 60 Architectural Mesh



Scale 1:2

Specification

Material	Stainless Steel 316L		
Max. Width	2 m	Finish	Natural
Open area	55 %	Weight	3.6 Kg/m ²

Availability

Available in 316 and 304 stainless. Can also be made to order in Galvanised Steel, Aluminium, Brass and Phosphor Bronze. Portland is a Progress Architecture product, supplied and distributed in the UK by Locker Architectural.

Typical Applications

Balustrades, facades, decorative radiator grilles, security panels and elevator cladding.

Locker is a UK based supplier of architectural wire mesh products certified to BS EN ISO 9001:2015. With comprehensive in house AutoCAD facilities we are able to offer a complete package from development of the architectural wire mesh specification through design, fabrication, supply and installation of the finished screens.