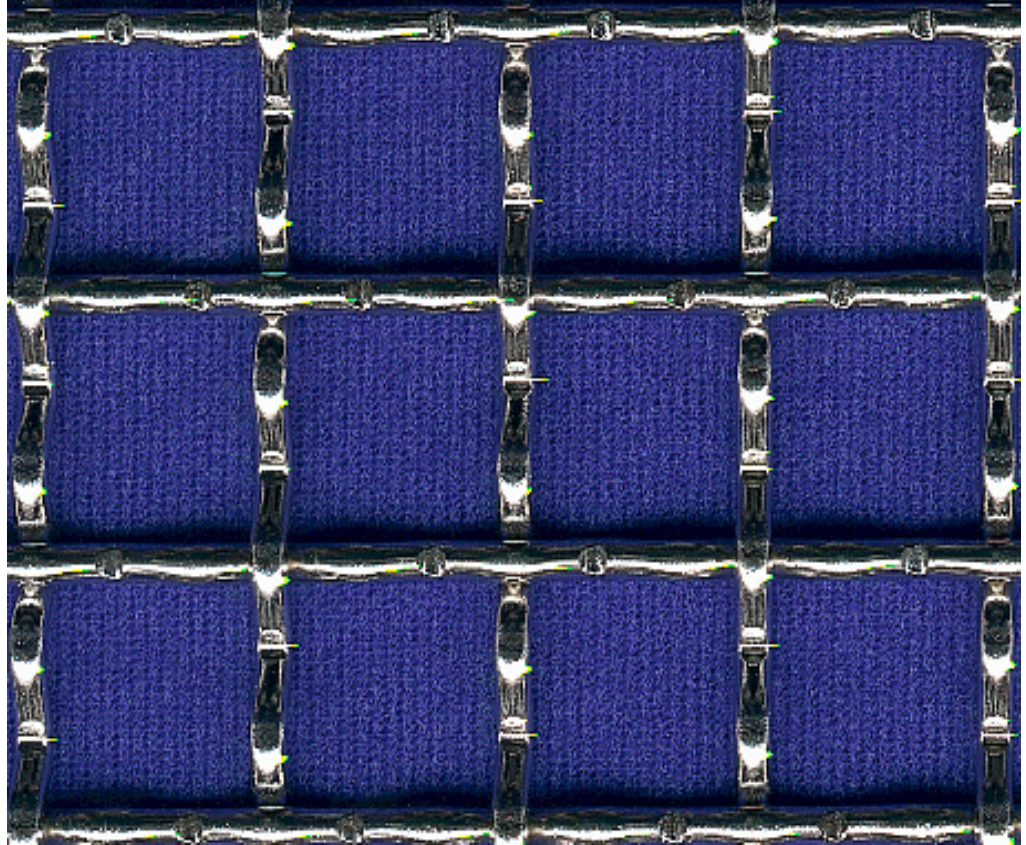


## Churchill 25/2.5 Architectural Wire Mesh



### Specification

Material	Stainless steel		
Aperture	25 x 25 mm	Wire	2.5 mm
Open area	83%	Weight	2.9 Kg/m <sup>2</sup>

A range of aperture sizes and wire diameters are available.

### Availability

Generally available in grades 316 and 304 stainless. Can also be made to order in Galvanised Steel, Aluminium, Brass and Phosphor Bronze.

### Typical Applications

Balustrades, facades, brie soleil, security panels and drapes.

Locker is a UK based supplier of architectural wire mesh products certified to BS EN ISO 9001:2008. With comprehensive in house AutoCAD facilities we are able to offer a complete package from development of the architectural wire mesh specification through design, fabrication, supply and installation of the finished screens.

www.architecturalwiremesh.com

Locker Architectural Ltd, Farrell Street, Warrington, WA1 2WW, United Kingdom  
 sales@lockergroup.com Tel: +44 (0)1925 406600 Fax: +44 (0)1925 444386

