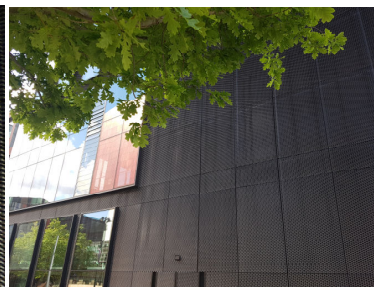
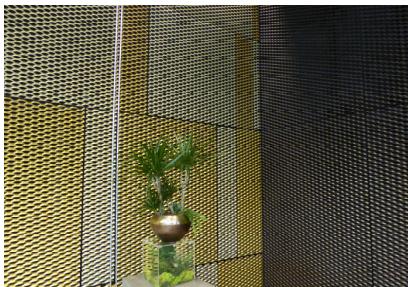


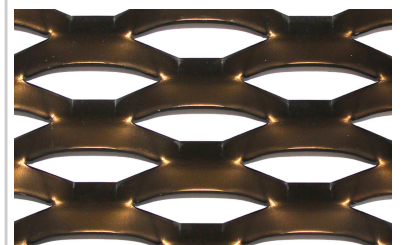
Project: First Street, Manchester



Number 8 First Street is the landmark multi-use building on the edge of Manchester's busy University Quarter.

Its light-responsive building façade is achieved with a custom-designed expanded metal mesh, carefully set out to form a cladding with a continuous geometric pattern and refined by a hard wearing bronze anodised surface treatment.

The mesh's spatial texture continues to the building's interior decorative metalwork forming the walls and ceilings to the Winter gardens and reception, where its surface is enhanced with bright gold anodised finish.



Material:
Mancunia Expanded Metal