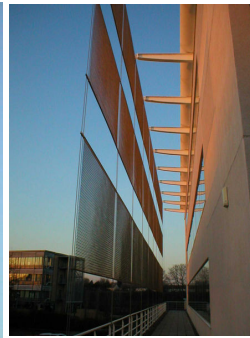
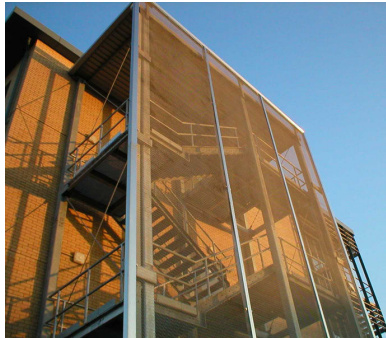


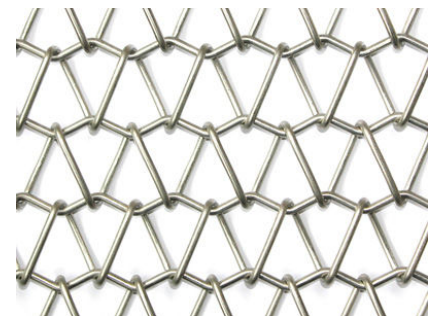
Project Name: Oxford Science Park



Coburg 12-12-12-12 architectural spiral wound mesh sun-screening at Oxford Science Park.

The screen is designed to allow differing amounts of light to pass through depending on the angle of the source. The mesh therefore filters maximum sunlight when the sun is at its highest, and allows more light flow early in the morning and at sunset.

Architect: Ian Ritchie Architects



Material:
Coburg 12-12-12-12
Spiral Mesh

Architectural



www.architecturalwiremesh.com

Locker Architectural Ltd, Farrell Street, Warrington, WA1 2WW, United Kingdom
sales@lockergroup.com Tel: +44 (0)1925 406600 Fax: +44 (0)1925 444386