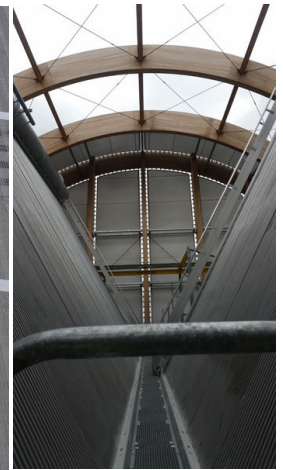
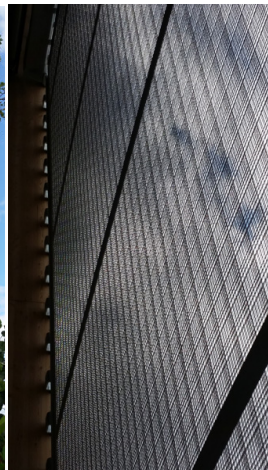


Project: Recycling & Energy Recovery Facility (ERF), Leeds

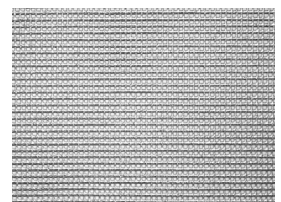


The Leeds Recycling and Energy Recovery Facility (ERF) 42m high main building is clad in Locker tension fabric mesh. Chineham mesh is used to clad the roof, and Caledonian 752 mesh is used for the sides and lower levels.

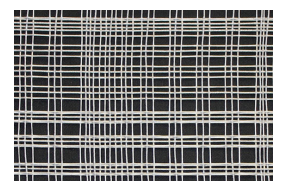
Created by internationally renowned architect, Jean-Robert Mazaud of S'pace Architects, the facility's design minimises offensive odours by drawing air constantly into the building from outside. The open weave of the tension fabric mesh facilitates this perfectly while blending beautifully with the curved timber frame to also present a visually appealing facade.

Main Contractor: Clugston Construction Ltd

Material: Tension Fabric Mesh



Chineham



Caledonian 752



www.architecturalwiremesh.com

Locker Architectural Ltd, Farrell Street, Warrington, WA1 2WW, United Kingdom
sales@lockergroup.com Tel: +44 (0)1925 406600 Fax: +44 (0)1925 444386