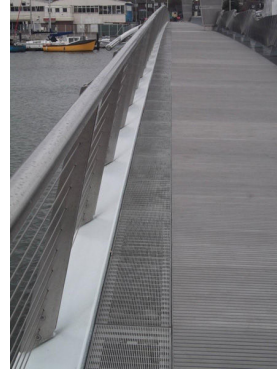
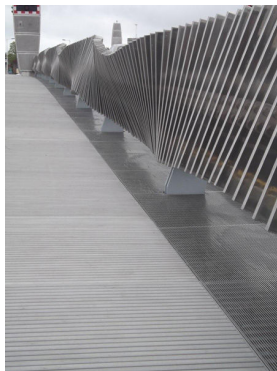


Project Name: Twin Sails Bridge, Borough of Poole, Dorset



Stockton Architectural Wedge Wire installed as walkway grating on the Twin Sails Bridge, Borough of Poole, Dorset.



Material:
Stockton Architectural Wedge Wire

www.architecturalwiremesh.com

Locker Architectural Ltd, Farrell Street, Warrington, WA1 2WW, United Kingdom
sales@lockergroup.com Tel: +44 (0)1925 406600 Fax: +44 (0)1925 444386